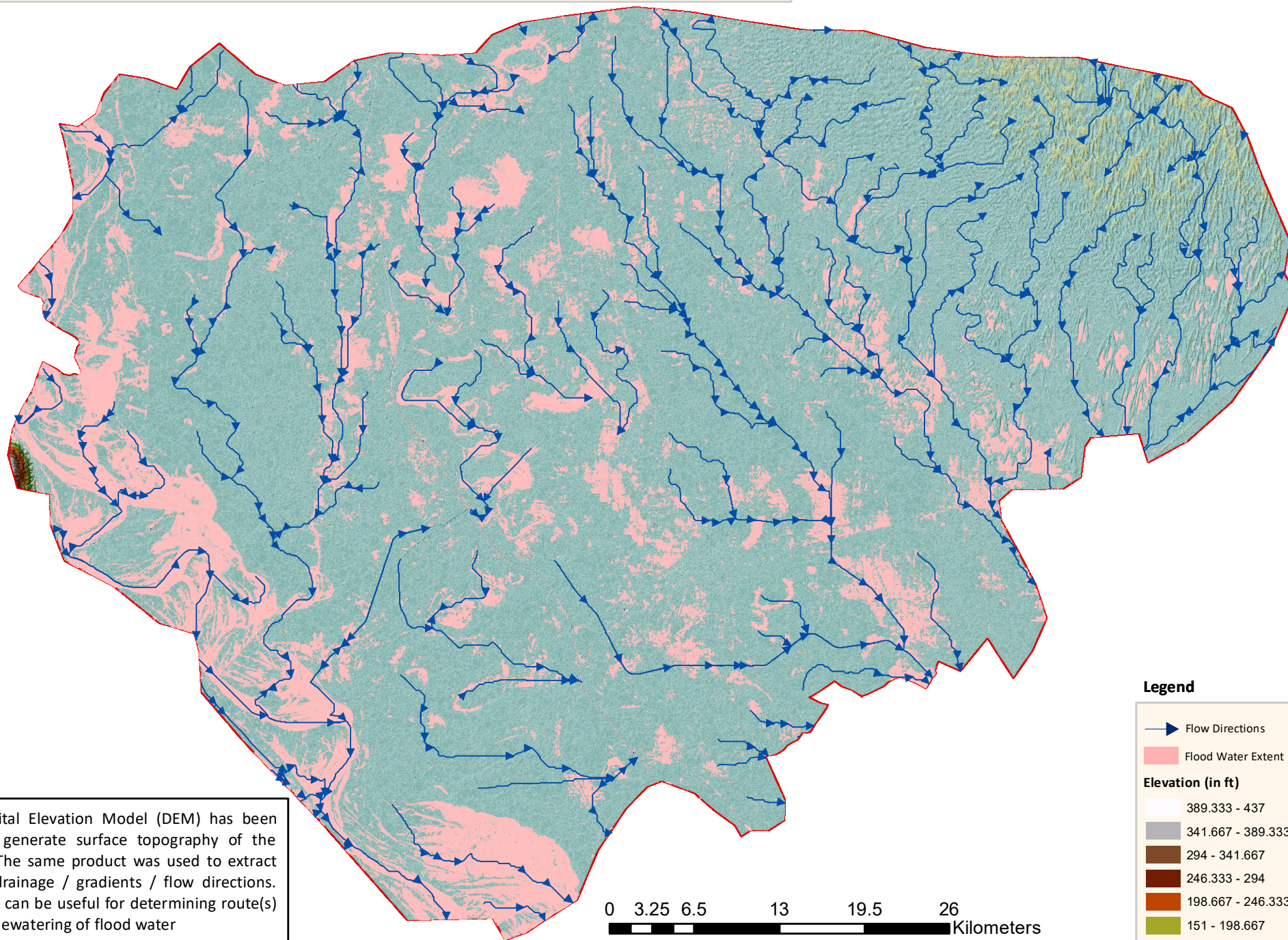


Natural Flow Directions - District Shaheed Benazirabad



5 m Digital Elevation Model (DEM) has been used to generate surface topography of the district. The same product was used to extract natural drainage / gradients / flow directions. This map can be useful for determining route(s) for safe dewatering of flood water

Legend

- Flow Directions
- Flood Water Extent
- Elevation (in ft)**
 - 389.333 - 437
 - 341.667 - 389.333
 - 294 - 341.667
 - 246.333 - 294
 - 198.667 - 246.333
 - 151 - 198.667
 - 103.333 - 151
 - 55.667 - 103.333
 - 8 - 55.667



Preliminary flood damage assessment carried out using Disaster Management Information System (DMIS)
@ Provincial Emergency Operation Center (PEOC), PDMA Sindh.